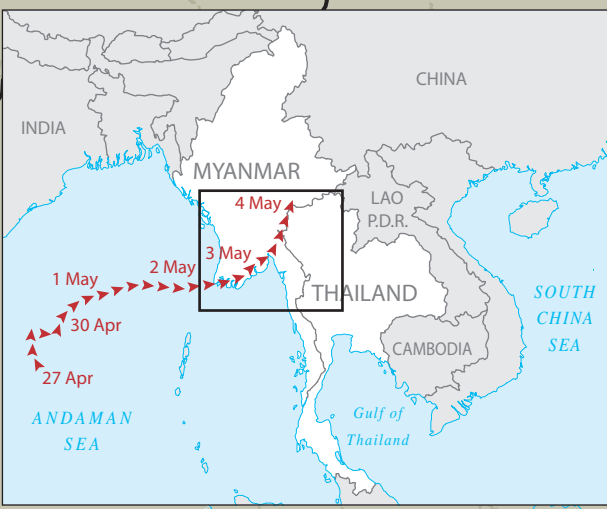
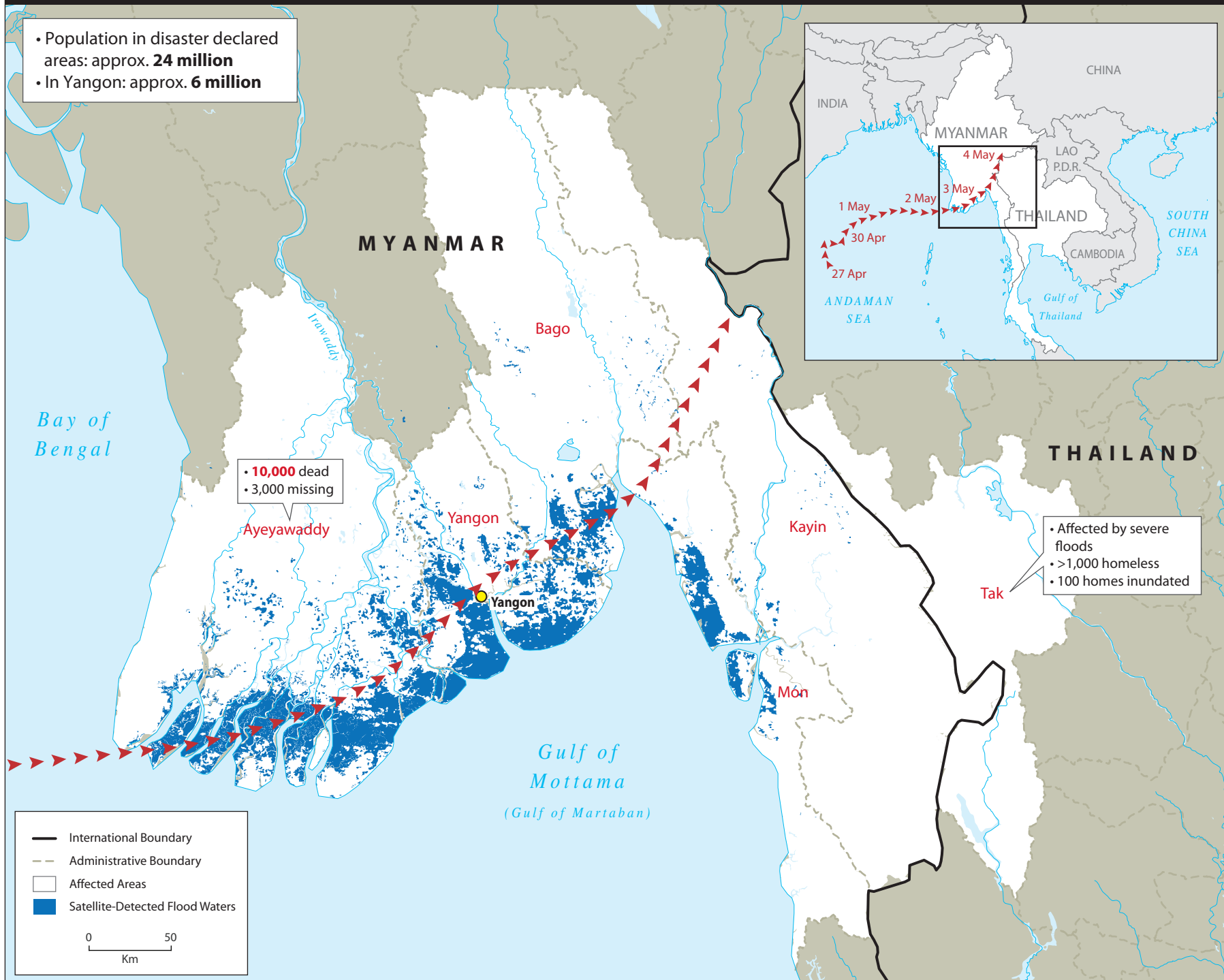


Myanmar: Tropical Cyclone Nargis (as of 5 May 2008)



- Population in disaster declared areas: approx. **24 million**
- In Yangon: approx. **6 million**



• **10,000** dead
• **3,000** missing

• Affected by severe floods
• >1,000 homeless
• 100 homes inundated

International Boundary
 Administrative Boundary
 Affected Areas
 Satellite-Detected Flood Waters

0 50
Km

SITUATION

- Cyclone Nargis struck Myanmar on 2 and 3 May 2008, sweeping through the Ayeyarwady (Irrawaddy) delta region and the country's largest city, Yangon.
- Government announced that military and police units deployed for rescue and cleanup operations.
- Efforts to carry out comprehensive assessment hindered by lack of communications and road access.
- Government pledged approx. USD 5 million and requested international assistance.

LINKS

- OCHA Situation Report No. 2
- Latest updates for Myanmar: Tropical Cyclone Nargis
- Related maps

Disclaimers:

The boundaries and names shown and the designations used on all maps do not imply official endorsement or acceptance by the United Nations.
The data and information represented originates from public sources as indicated. ReliefWeb makes every effort to use the latest available data and to ensure that its products are accurate, complete and timely, but no warranties are made to this effect. Comments are welcome to maps@reliefweb.int.

Creation date: 5 May 2008
Base map sources: UNCS, UNISYS, UNOSAT, Global Discovery, GAUL.

Narrative and statistical sources:
UN OCHA. 5 May 2008. OCHA Situation Report No.2.

